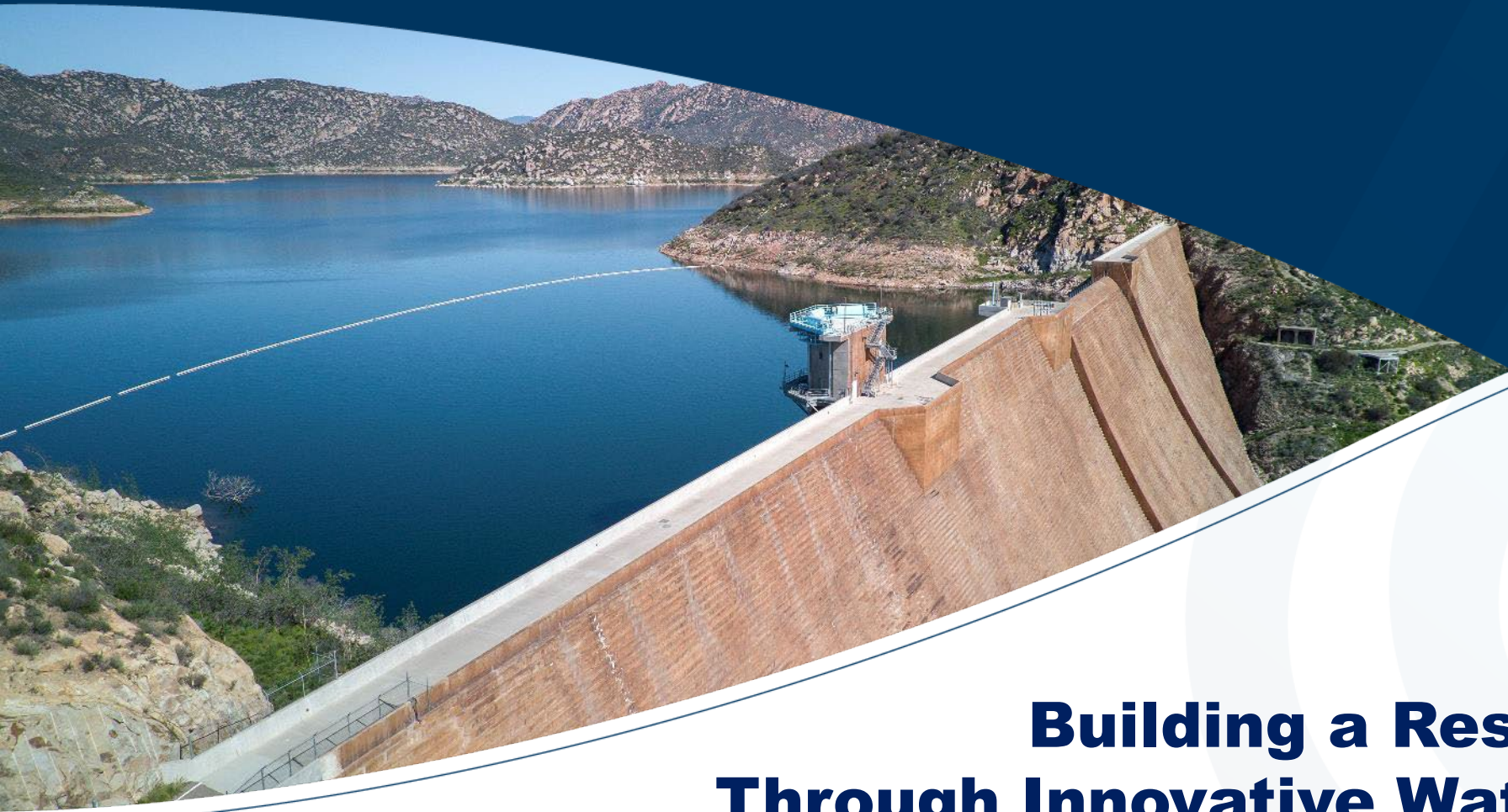




San Diego County  
Water Authority



# **Building a Resilient Tomorrow Through Innovative Water Management**

February 28, 2024

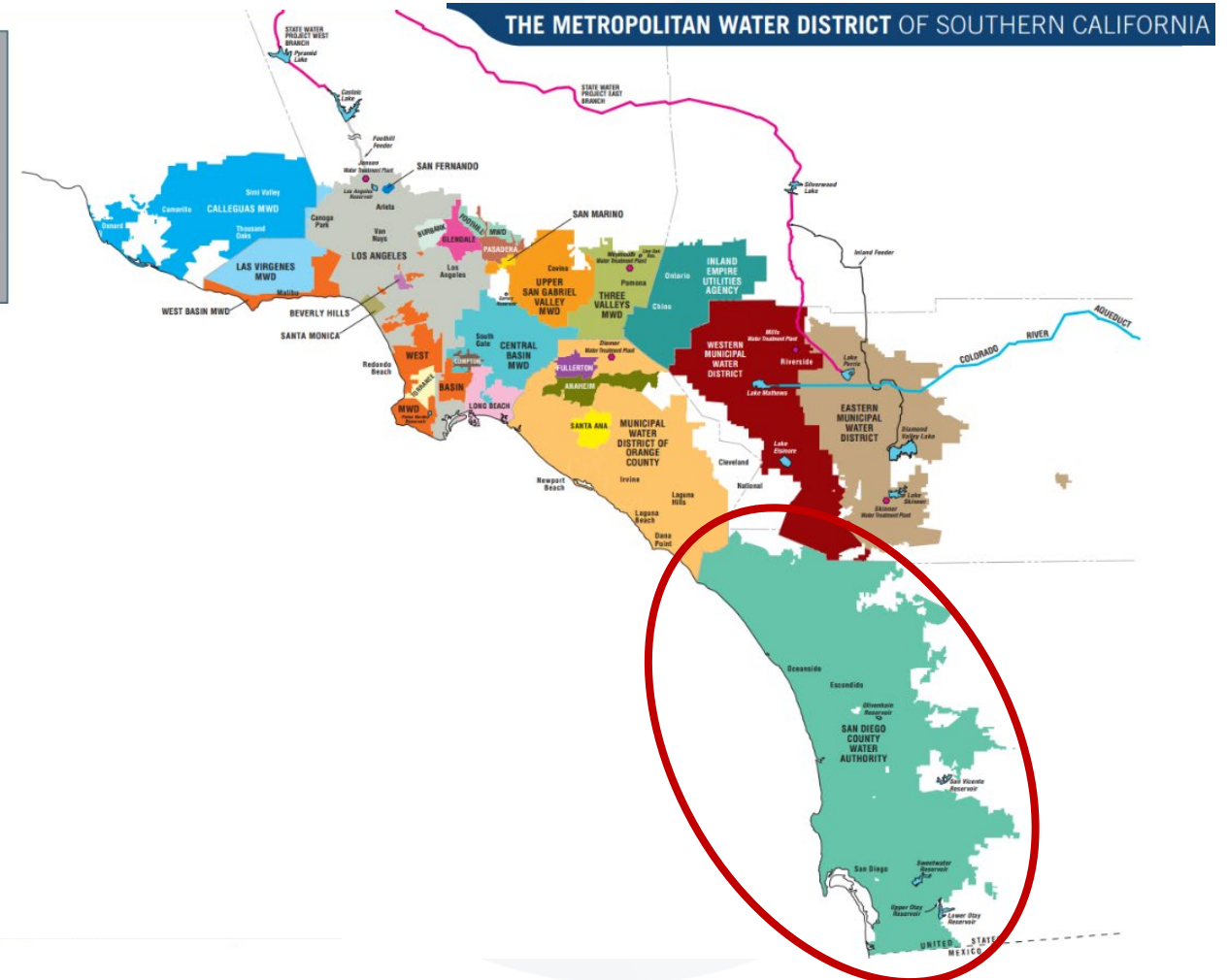
Southern California Water Dialogue

**Dan Denham**  
General Manager

# A MWD Member Agency

At the end of the pipeline

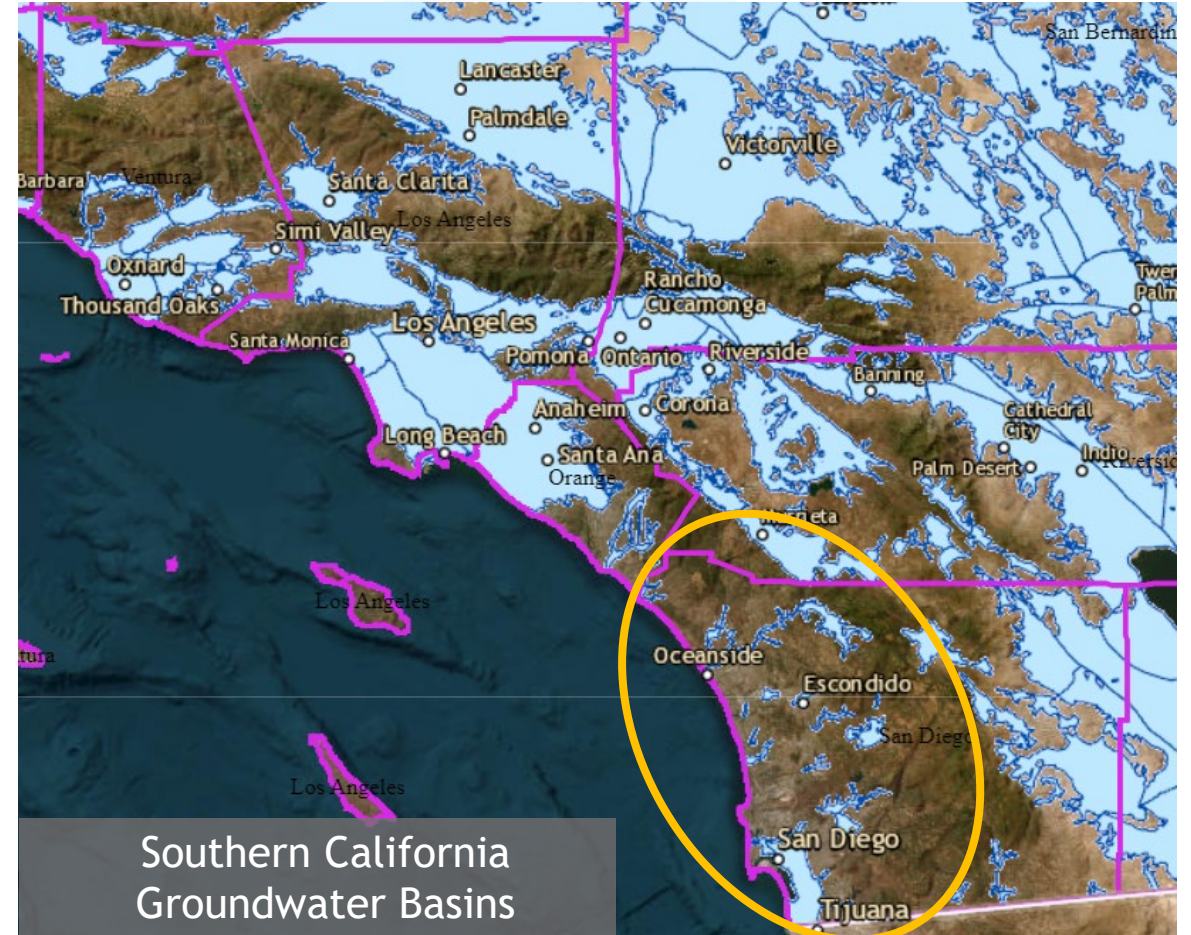
- Established in 1944
- Water wholesaler to county
- 3.3 million people
- \$268 billion economy





# Limited Natural Water Resources

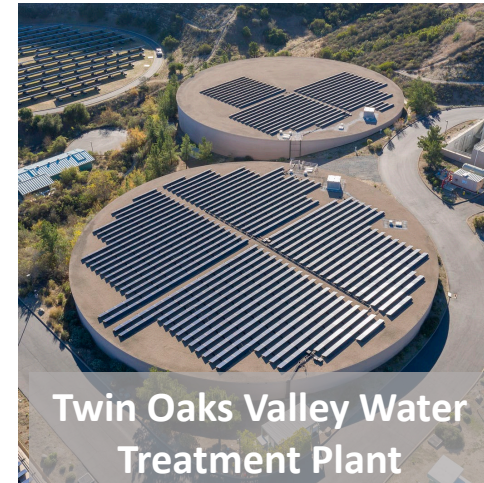
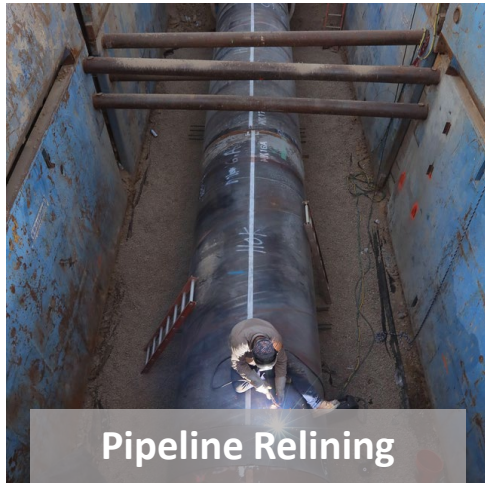
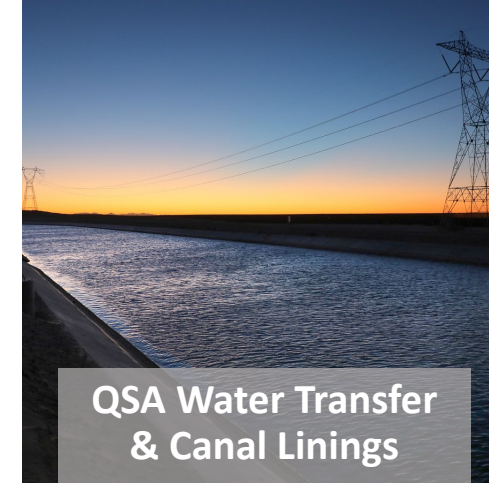
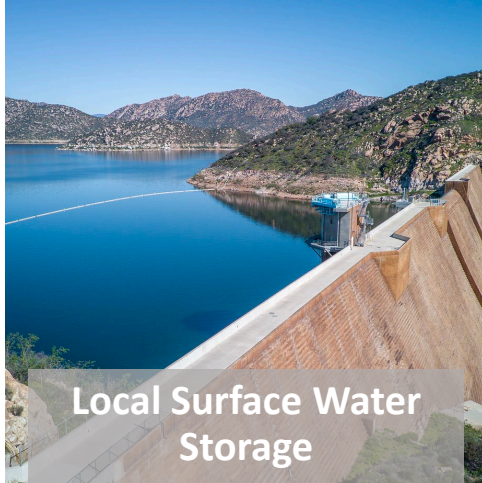
Sunshine in spades with minimal groundwater basins and limited precipitation



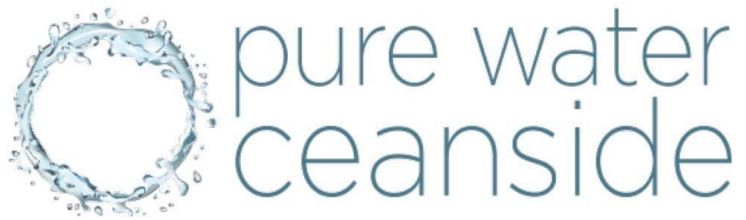


# 1990s Drought Jump Started Strategic Investments in Supply Reliability

\$3 Billion in new infrastructure since 2000

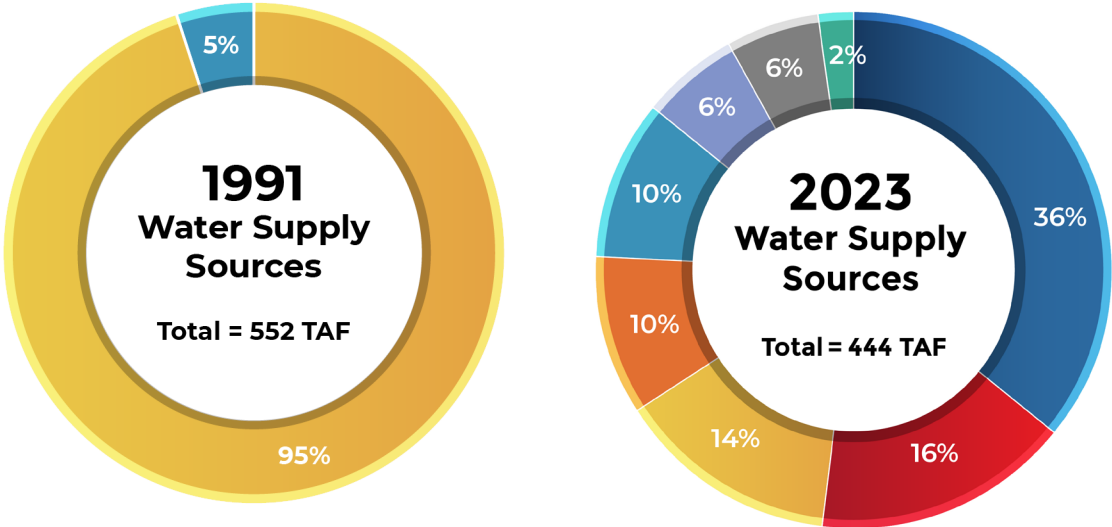


# Next Generation of Resiliency: Potable Reuse Projects



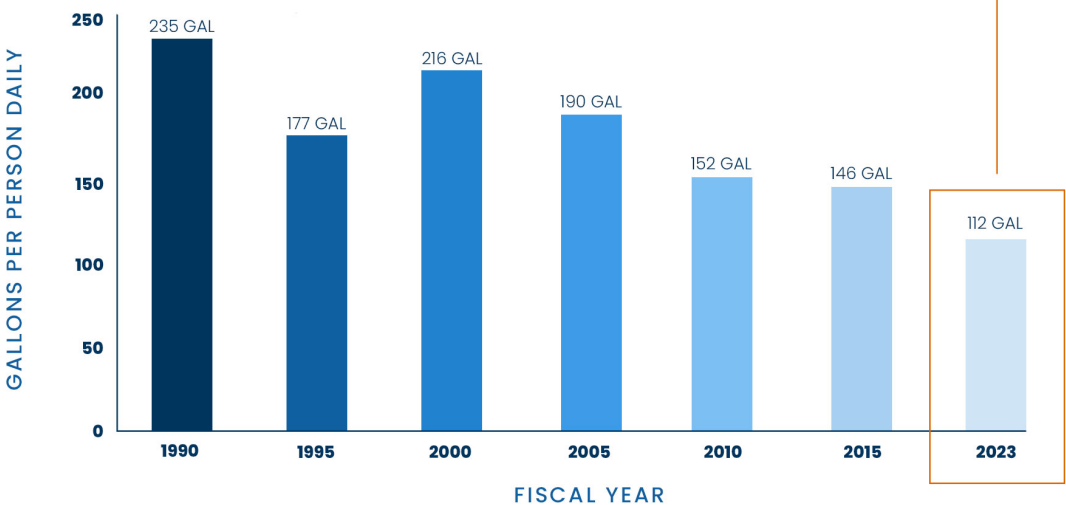


# Results of Supply & Resilience Investments



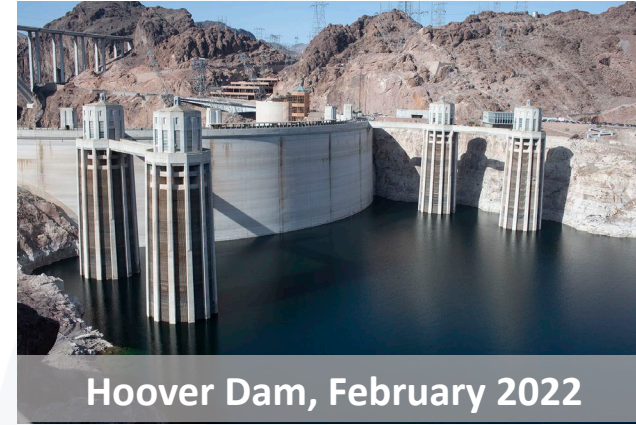
- Conserved Water/IID
- Conserved Water/Canal Lining
- Seawater Desalination
- Metropolitan Water District
- Recycled Water
- Local Surface Water
- Groundwater
- San Luis Rey Water Transfer

Per capita water use in San Diego region has declined more than 50% since 1990



# Climate Whiplash

After multiple years of drought, 2023's deluge soaked California and brought relief on the Colorado River





# Pioneering Partnerships

2023 paved the way for new, innovative approaches to better manage our resources





# Continuing to Evolve

Optimize existing resources and leverage flexible systems





**SDCWA.org**



**WaterNews  
Network.com**



**SDCWA**



**SDCWA**



**SanDiegoCounty  
WaterAuthority**



San Diego County  
Water Authority

